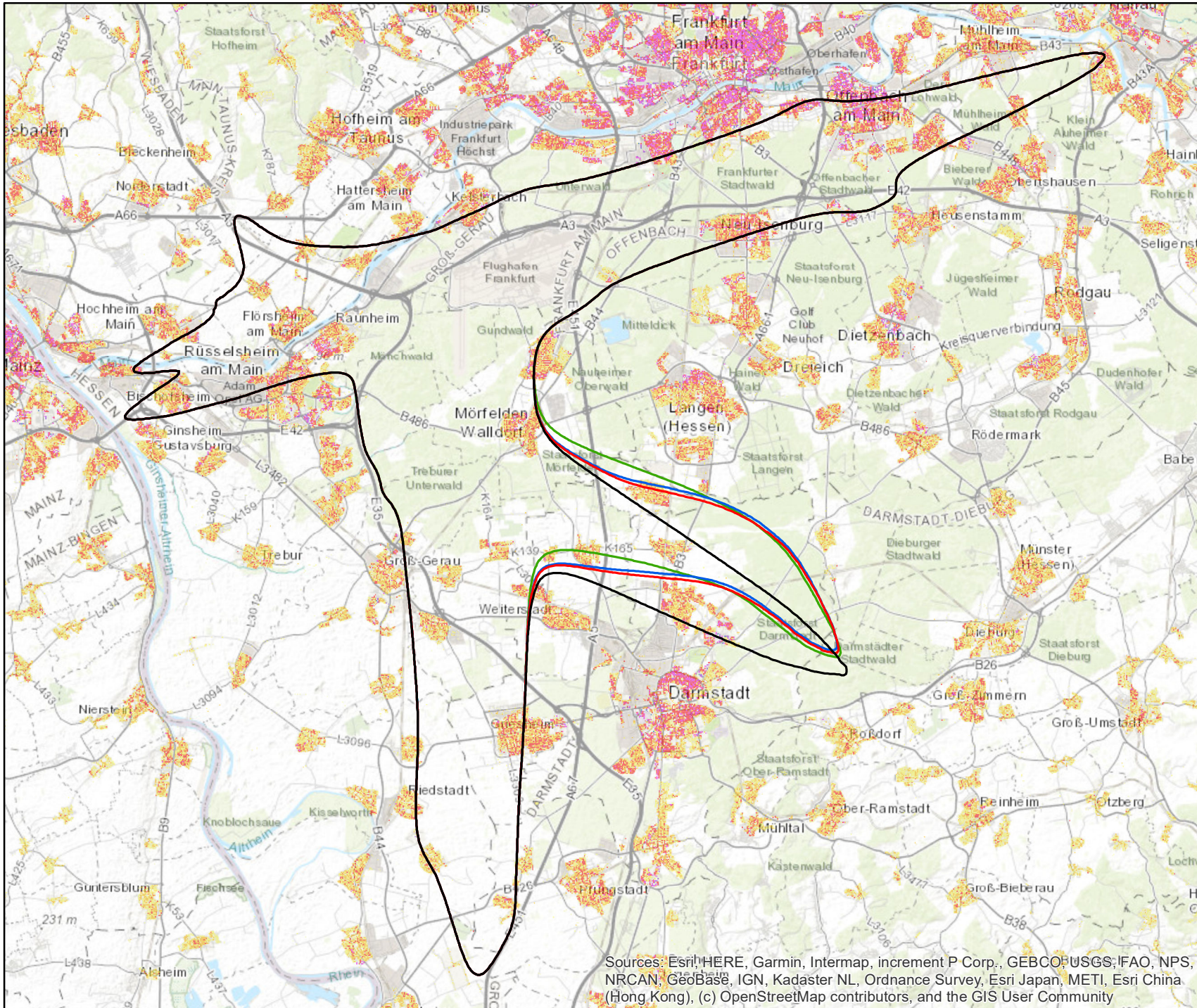






# Amtix-kurz Varianten (DES 2023) – Erw. Kontrollgebiet Nacht (LAeq,N ≥ 43 dB(A))



## Legende

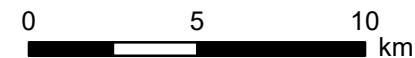
### Amtix-kurz Varianten

-  Referenz
-  CINDY S\_A\_BR18
-  CINDY S\_B\_BR18
-  CINDY S\_C\_BR18

### Bevölkerungsdichte (Personen/50 m x 50 m)

-  ≤ 5
-  > 5 - 10
-  > 10 - 20
-  > 20 - 50
-  > 50 - 110
-  > 110 - 250
-  > 250

Quelle: infas 360 GmbH, 2023

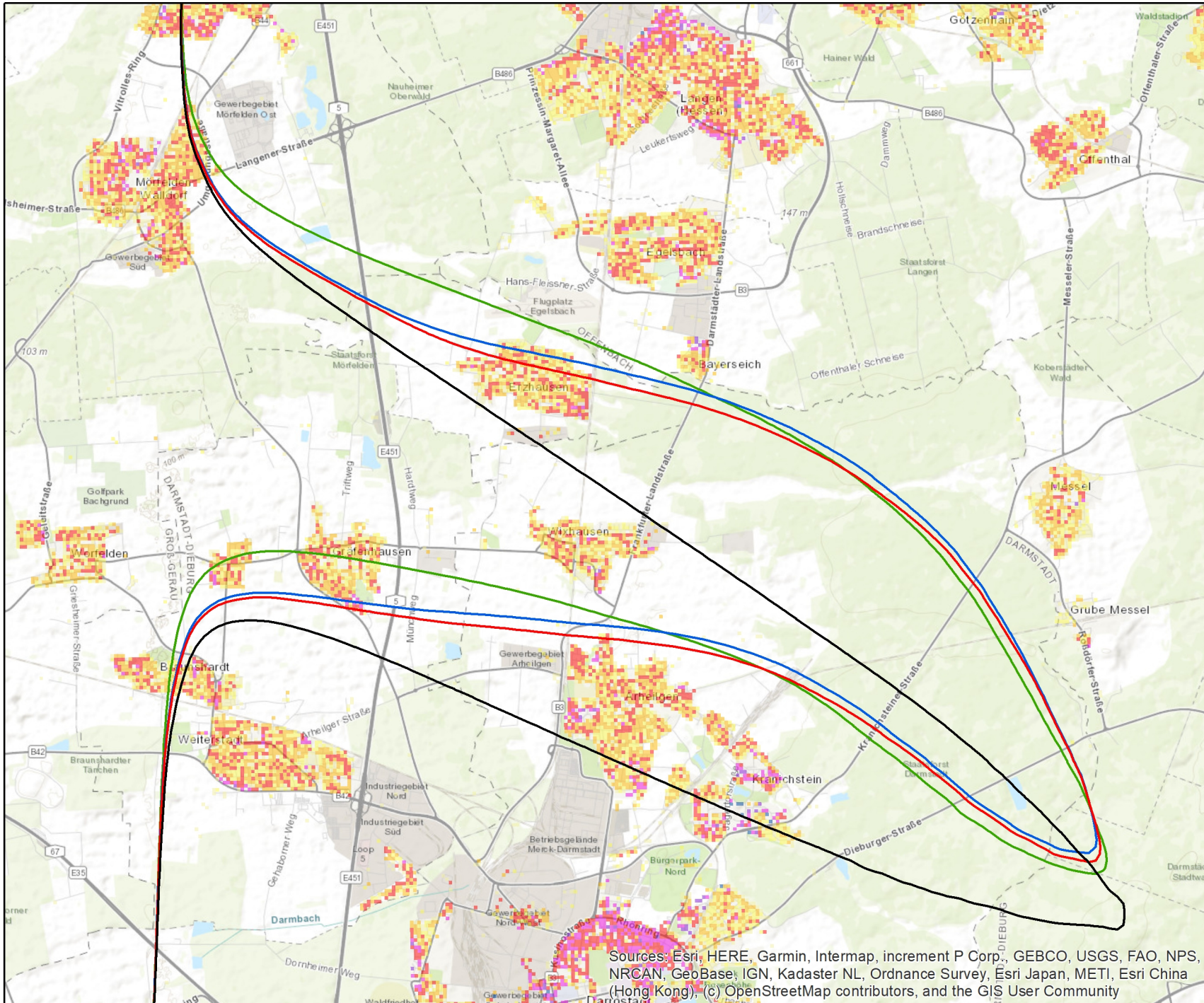


Maßstab 1:225.000

Sources: Esri, HERE, Garmin, Intermap, increment P Corp., GEBCO, USGS, FAO, NPS, NRCAN, GeoBase, IGN, Kadaster NL, Ordnance Survey, Esri Japan, METI, Esri China (Hong Kong), (c) OpenStreetMap contributors, and the GIS User Community

Gemeinnützige  
Umwelthaus GmbH

# Amtix-kurz (DES 2023) – Erw. Kontrollgebiet Nacht (LAeq,N ≥ 43 dB(A))



## Legende

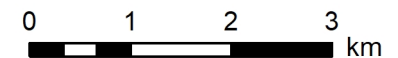
### Amtix-Varianten

- Referenz
- CINDY S\_A\_BR18
- CINDY S\_B\_BR18
- CINDY S\_C\_BR18

### Bevölkerungsdichte (Personen/50 m x 50 m)

- ≤ 5
- > 5 - 10
- > 10 - 20
- > 20 - 50
- > 50 - 110
- > 110 - 250
- > 250

Quelle: infas 360 GmbH, 2023

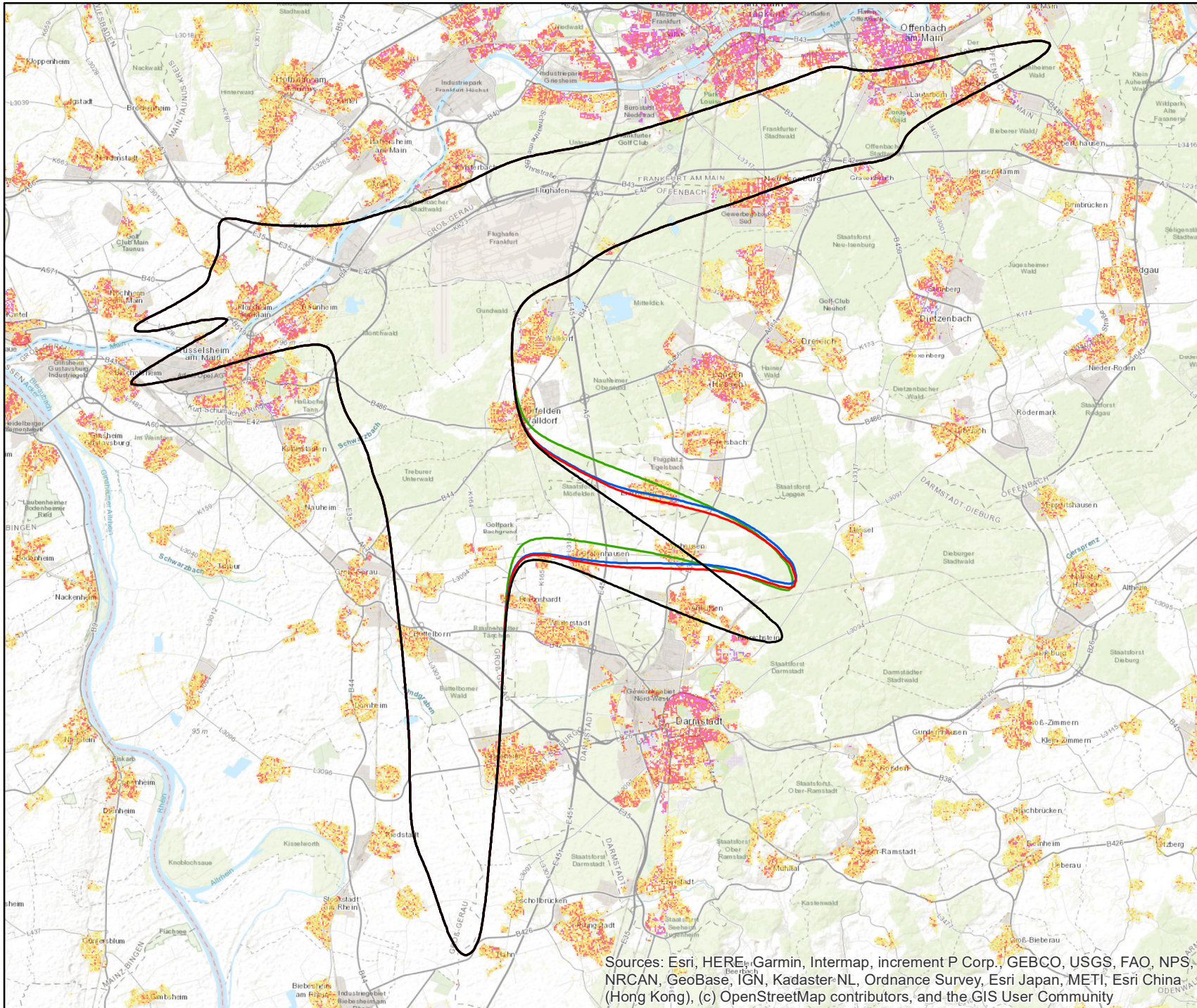


Maßstab 1:75.000

Sources: Esri, HERE, Garmin, Intermap, increment P Corp., GEBCO, USGS, FAO, NPS, NRCAN, GeoBase, IGN, Kadaster NL, Ordnance Survey, Esri Japan, METI, Esri China (Hong Kong), (c) OpenStreetMap contributors, and the GIS User Community





Gemeinnützige  
Umwelthaus GmbH

# Amtix-kurz Varianten (DES 2023) – Nachtindexgebiet (L<sub>Aeq,N</sub> ≥ 45 dB(A))



## Legende

### Amtix-kurz Varianten

-  Referenz
-  CINDY S\_A\_BR18
-  CINDY S\_B\_BR18
-  CINDY S\_C\_BR18

### Bevölkerungsdichte (Personen/50 m x 50 m)

-  ≤ 5
-  > 5 - 10
-  > 10 - 20
-  > 20 - 50
-  > 50 - 110
-  > 110 - 250
-  > 250

Quelle: infas 360 GmbH, 2023



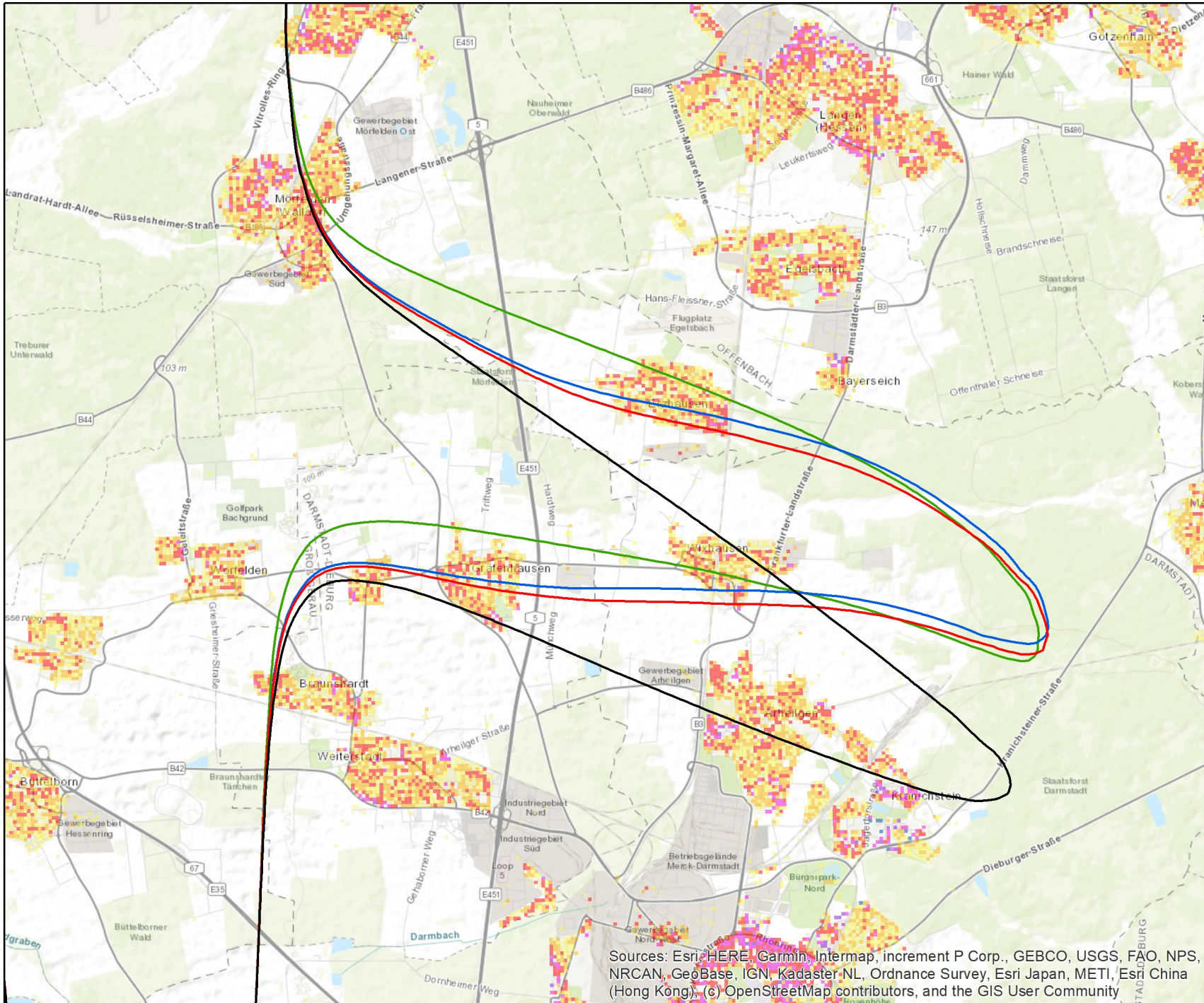
0 4 8 km

Maßstab 1:200.000

Sources: Esri, HERE, Garmin, Intermap, increment P Corp., GEBCO, USGS, FAO, NPS, NRCAN, GeoBase, IGN, Kadaster-NL, Ordnance Survey, Esri Japan, METI, Esri China (Hong Kong), (c) OpenStreetMap contributors, and the GIS User Community

Gemeinnützige  
Umwelthaus GmbH

# Amtix-kurz (DES 2023) – Nachtindexgebiet (LAeq,N ≥ 45 dB(A))



## Legende

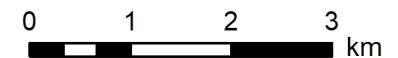
### Amtix-Varianten

- Referenz
- CINDY S\_A\_BR18
- CINDY S\_B\_BR18
- CINDY S\_C\_BR18

### Bevölkerungsdichte (Personen/50 m x 50 m)

- ≤ 5
- > 5 - 10
- > 10 - 20
- > 20 - 50
- > 50 - 110
- > 110 - 250
- > 250

Quelle: infas 360 GmbH, 2023

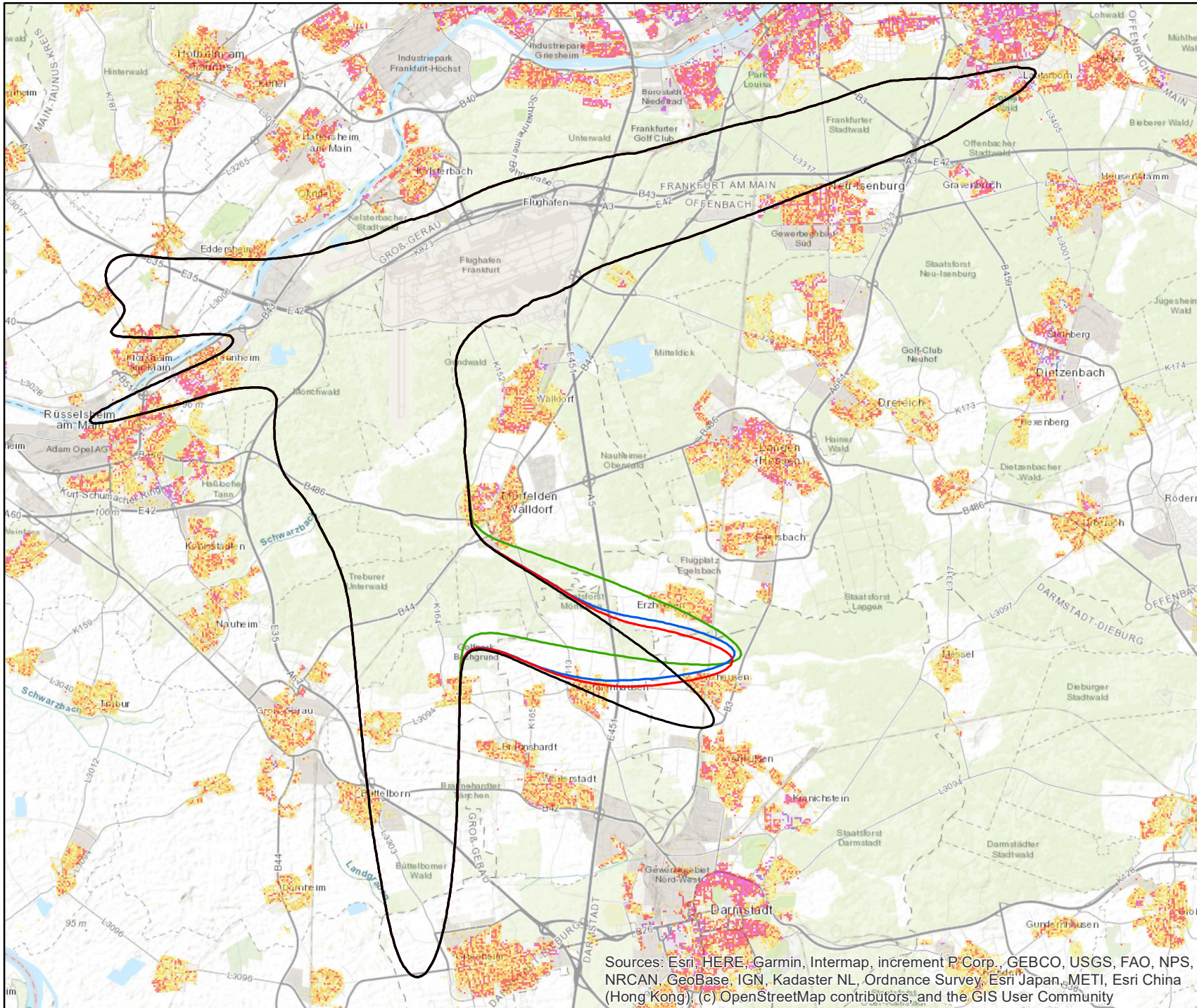


Maßstab 1:75.000

Sources: Esri, HERE, Garmin, Intermap, increment P Corp., GEBCO, USGS, FAO, NPS, NRCAN, GeöBase, IGN, Kadaster NL, Ordnance Survey, Esri Japan, METI, Esri China (Hong Kong), (c) OpenStreetMap contributors, and the GIS User Community

Gemeinnützige  
Umwelthaus GmbH

# Amtix-kurz Varianten (DES 2023) – Hochbetroffenengebiet Nacht (LAeq,N ≥ 50 dB(A) & LAm<sub>ax</sub>,N 6 x 68 dB(A))



## Legende

### Amtix-kurz Varianten

- Referenz
- CINDY S\_A\_BR18
- CINDY S\_B\_BR18
- CINDY S\_C\_BR18

### Bevölkerungsdichte (Personen/50 m x 50 m)

- ≤ 5
- > 5 - 10
- > 10 - 20
- > 20 - 50
- > 50 - 110
- > 110 - 250
- > 250

Quelle: infas 360 GmbH, 2023



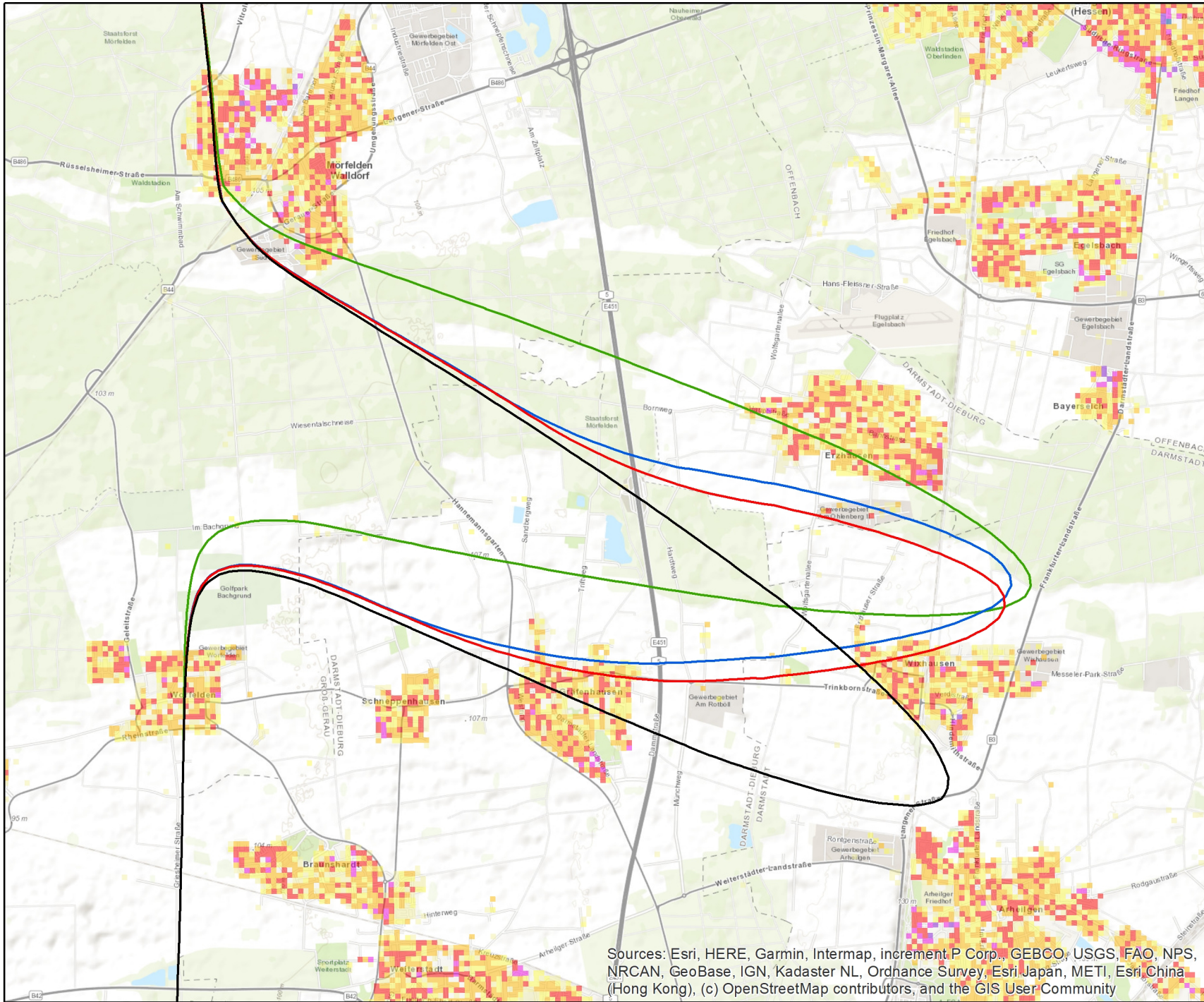
0 3 6 km

Maßstab 1:150.000

Sources: Esri, HERE, Garmin, Intermap, increment P Corp., GEBCO, USGS, FAO, NPS, NRCAN, GeoBase, IGN, Kadaster NL, Ordnance Survey, Esri Japan, METI, Esri China (Hong Kong), (c) OpenStreetMap contributors, and the GIS User Community





Gemeinnützige  
Umwelthaus GmbH

# Amtix-kurz (DES 2023) – Hochbetroffenengebiet Nacht (LAeq,N ≥ 50 dB(A) & LAmax,N 6 x 68 dB(A))





## Legende

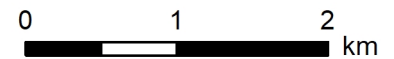
### Amtix-Varianten

-  Referenz
-  CINDY S\_A\_BR18
-  CINDY S\_B\_BR18
-  CINDY S\_C\_BR18

### Bevölkerungsdichte (Personen/50 m x 50 m)

-  ≤ 5
-  > 5 - 10
-  > 10 - 20
-  > 20 - 50
-  > 50 - 110
-  > 110 - 250
-  > 250

Quelle: infas 360 GmbH, 2023



Maßstab 1:50.000

Sources: Esri, HERE, Garmin, Intermap, increment P Corp., GEBCO, USGS, FAO, NPS, NRCAN, GeoBase, IGN, Kadaster NL, Ordnance Survey, Esri Japan, METI, Esri China (Hong Kong), (c) OpenStreetMap contributors, and the GIS User Community

Gemeinnützige  
Umwelthaus GmbH