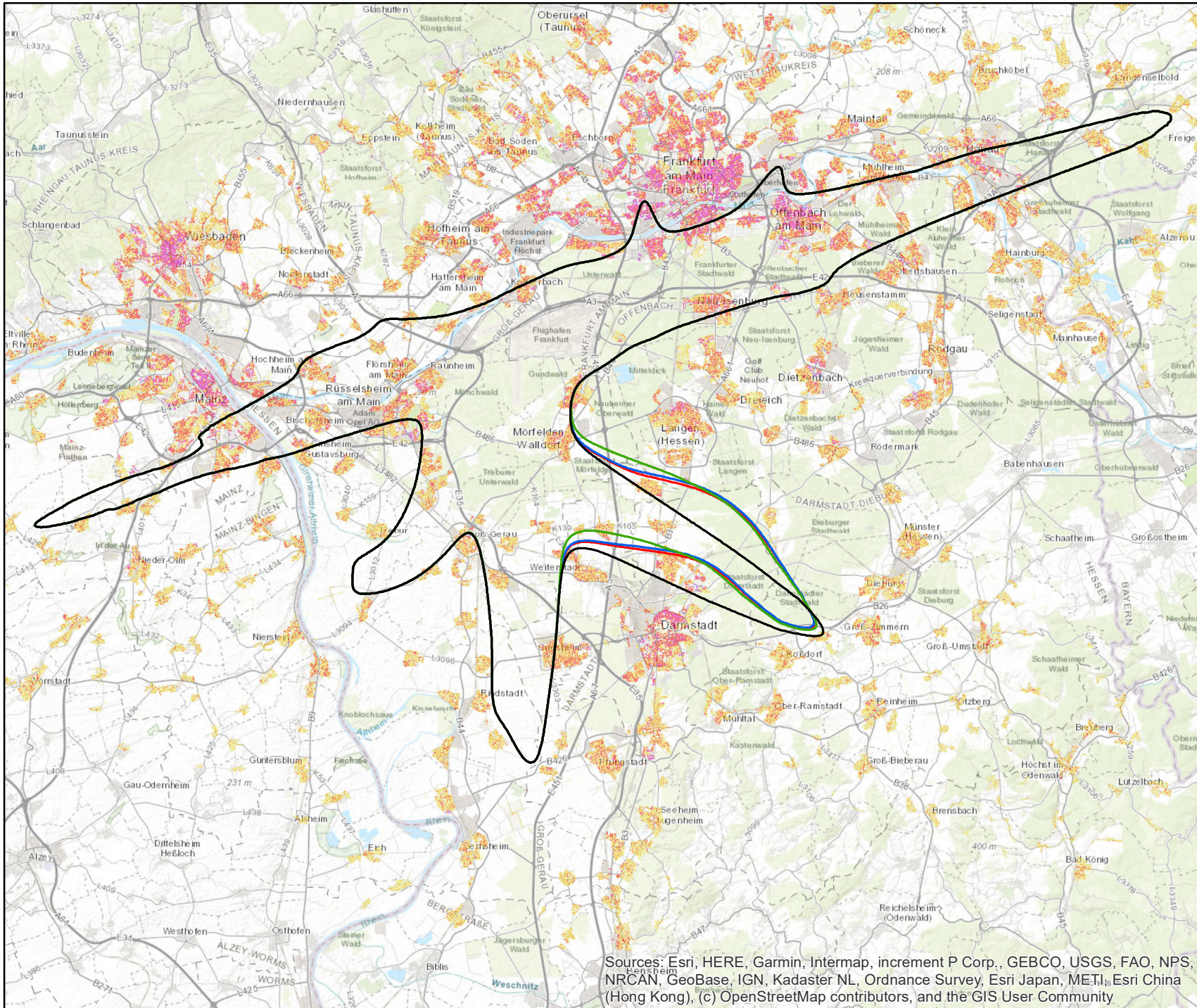






Amtix-kurz Varianten (DES 2023) – Erw. Kontrollgebiet Tag (L_{Aeq,T} ≥ 48 dB(A))



Legende

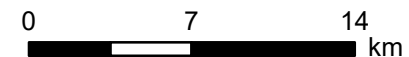
Amtix-kurz Varianten

-  Referenz
-  CINDY S_A_BR18
-  CINDY S_B_BR18
-  CINDY S_C_BR18

Bevölkerungsdichte (Personen/50 m x 50 m)

-  ≤ 5
-  > 5 - 10
-  > 10 - 20
-  > 20 - 50
-  > 50 - 110
-  > 110 - 250
-  > 250

Quelle: infas 360 GmbH, 2023

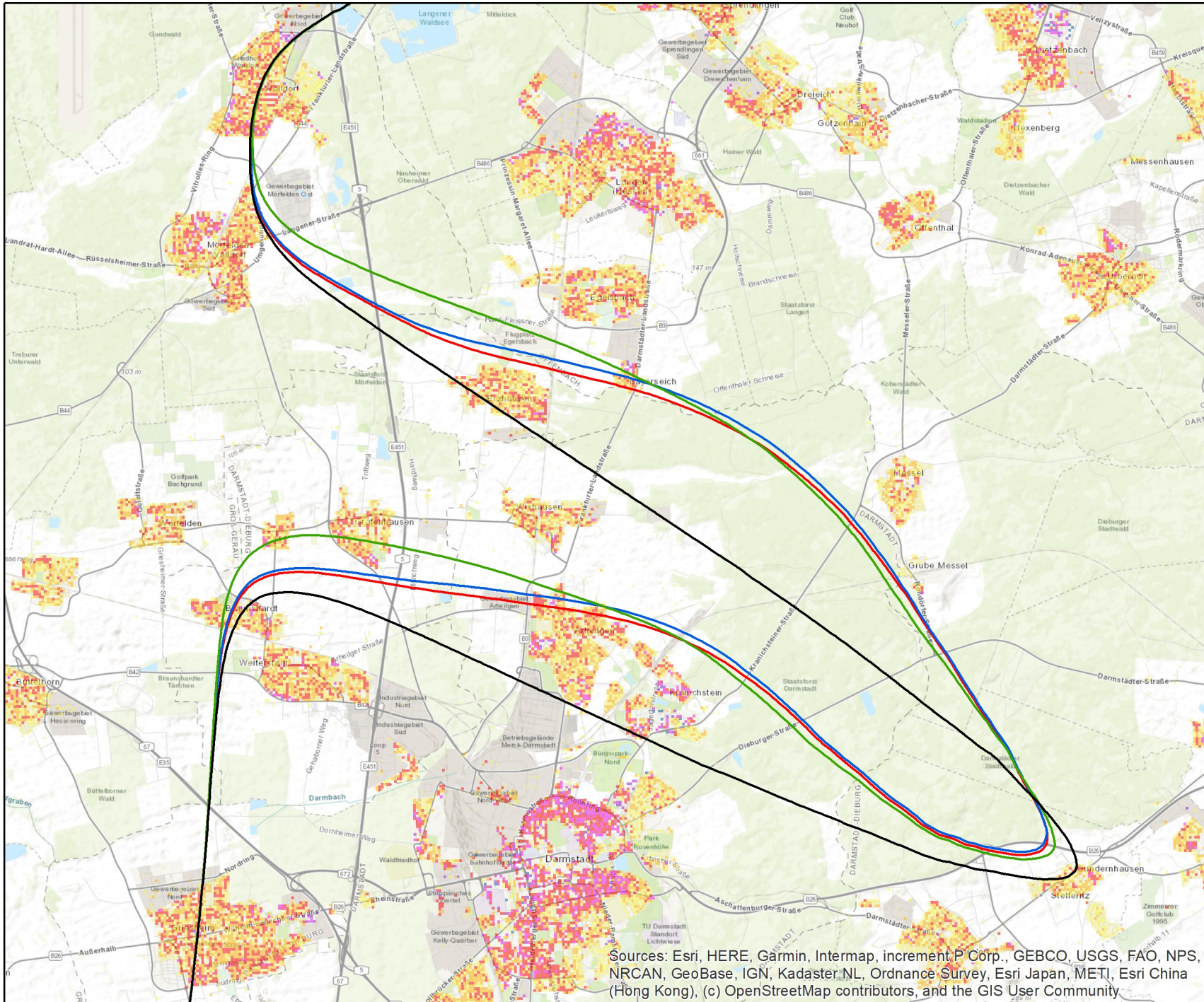


Maßstab 1:325.000

Sources: Esri, HERE, Garmin, Intermap, increment P Corp., GEBCO, USGS, FAO, NPS, NRCAN, GeoBase, IGN, Kadaster NL, Ordnance Survey, Esri Japan, METI, Esri China (Hong Kong), (c) OpenStreetMap contributors, and the GIS User Community

Gemeinnützige
Umwelthaus GmbH

Amtix-kurz (DES 2023) – Erw. Kontrollgebiet Tag (L_{Aeq,T} ≥ 48 dB(A))



Legende

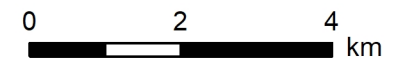
Amtix-Varianten

- Referenz
- CINDY S_A_BR18
- CINDY S_B_BR18
- CINDY S_C_BR18

Bevölkerungsdichte (Personen/50 m x 50 m)

- ≤ 5
- > 5 - 10
- > 10 - 20
- > 20 - 50
- > 50 - 110
- > 110 - 250
- > 250

Quelle: infas 360 GmbH, 2023

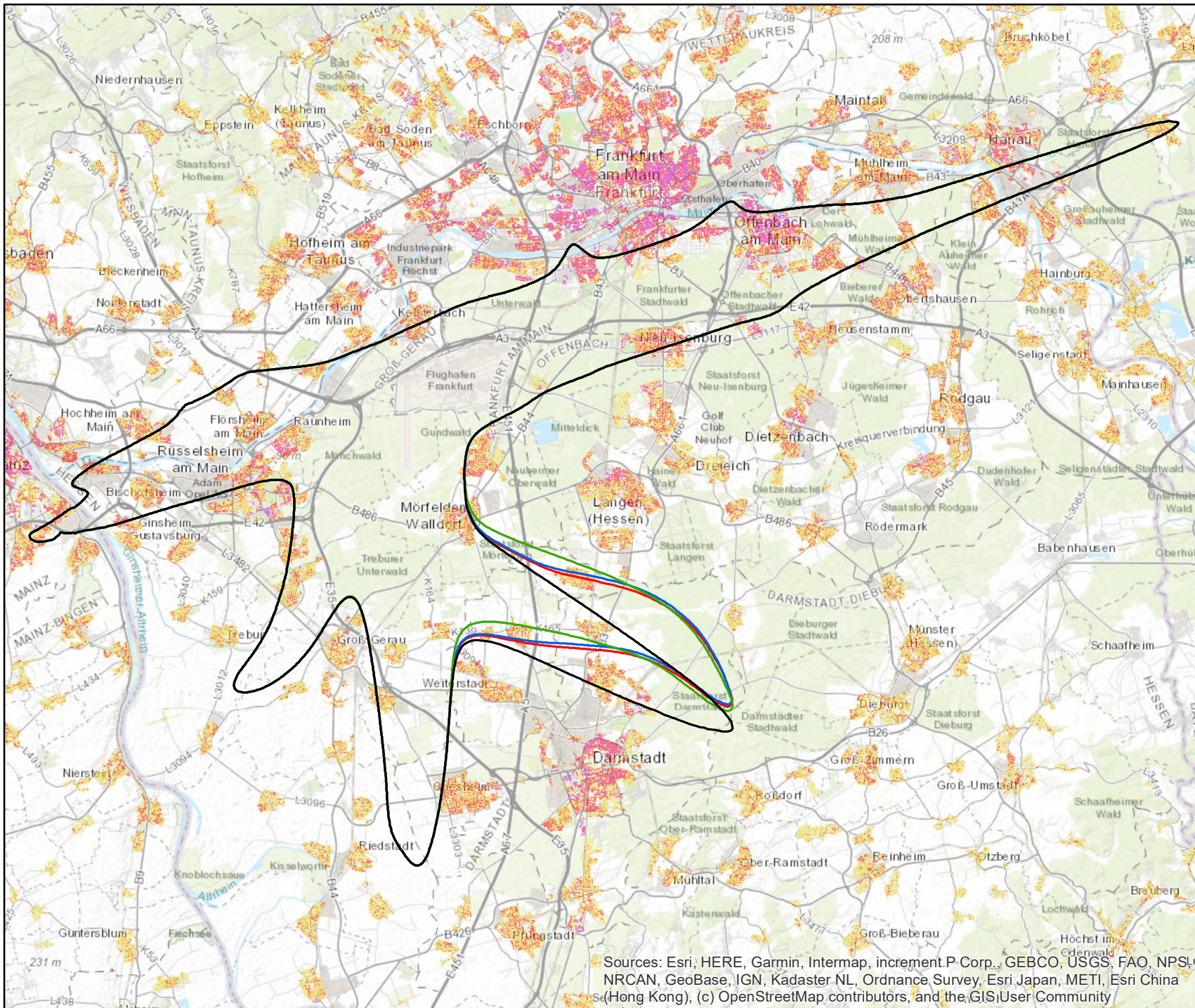


Maßstab 1:100.000

Sources: Esri, HERE, Garmin, Intermap, increment P Corp., GEBCO, USGS, FAO, NPS, NRCAN, GeoBase, IGN, Kadaster NL, Ordnance Survey, Esri Japan, METI, Esri China (Hong Kong), (c) OpenStreetMap contributors, and the GIS User Community





Gemeinnützige
Umwelthaus GmbH

Amtix-kurz Varianten (DES 2023) – Tagindexgebiet 2 (L_{Aeq,T} ≥ 50 dB(A))



Legende

Amtix-kurz Varianten

-  Referenz
-  CINDY S_A_BR18
-  CINDY S_B_BR18
-  CINDY S_C_BR18

Bevölkerungsdichte (Personen/50 m x 50 m)

-  ≤ 5
-  > 5 - 10
-  > 10 - 20
-  > 20 - 50
-  > 50 - 110
-  > 110 - 250
-  > 250

Quelle: infas 360 GmbH, 2023



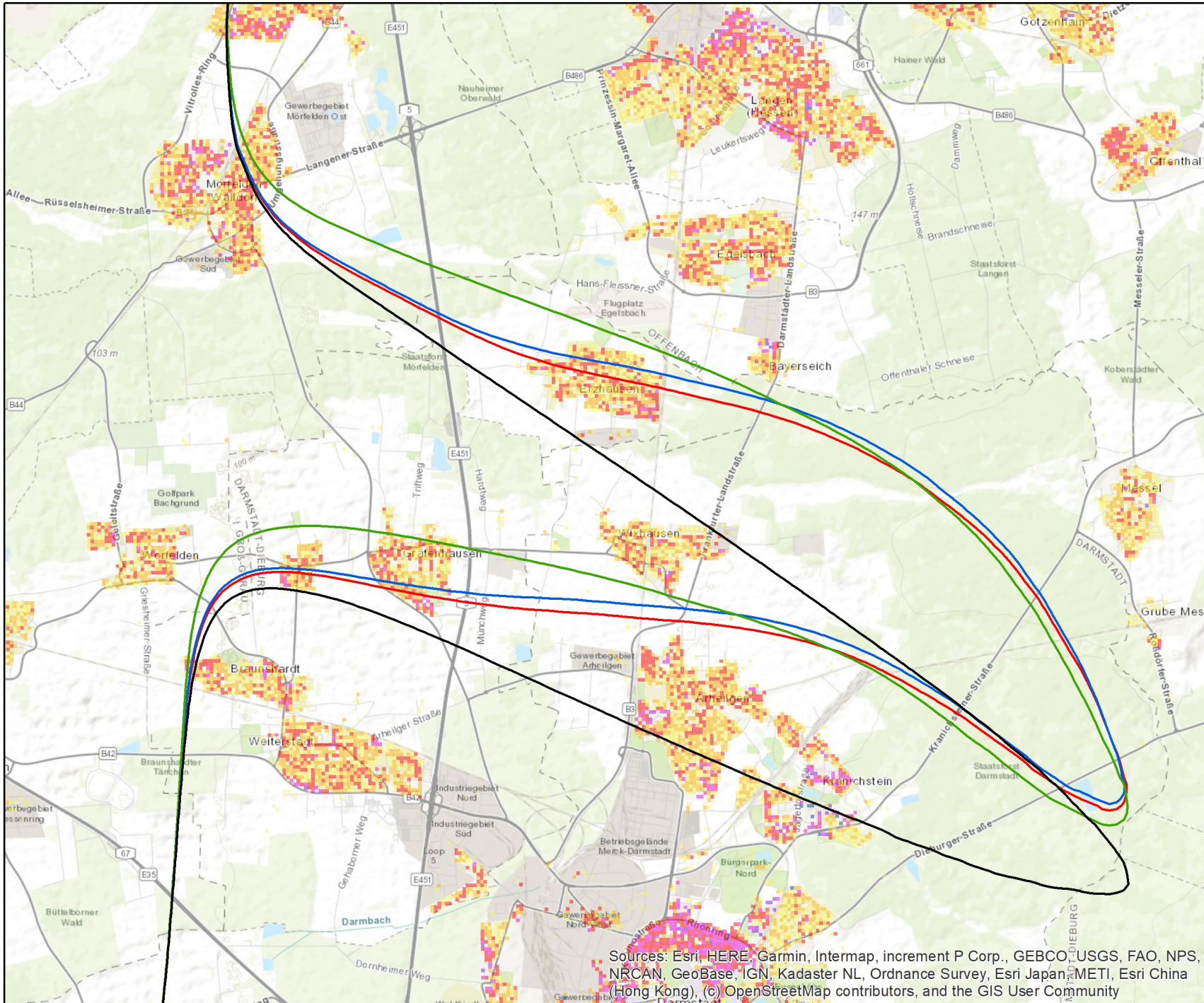
0 5 10 km

Maßstab 1:250.000

Sources: Esri, HERE, Garmin, Intermap, increment.P Corp., GEBCO, USGS, FAO, NPS, NRCAN, GeoBase, IGN, Kadaster NL, Ordnance Survey, Esri Japan, METI, Esri China (Hong Kong), (c) OpenStreetMap contributors, and the GIS User Community

Gemeinnützige
Umwelthaus GmbH

Amtix-kurz (DES 2023) – Tagindexgebiet 2 (LAeq,T ≥ 50 dB(A))



Legende

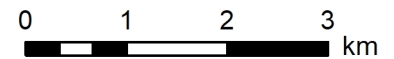
Amtix-Varianten

- Referenz
- CINDY S_A_BR18
- CINDY S_B_BR18
- CINDY S_C_BR18

Bevölkerungsdichte (Personen/50 m x 50 m)

- ≤ 5
- > 5 - 10
- > 10 - 20
- > 20 - 50
- > 50 - 110
- > 110 - 250
- > 250

Quelle: infas 360 GmbH, 2023

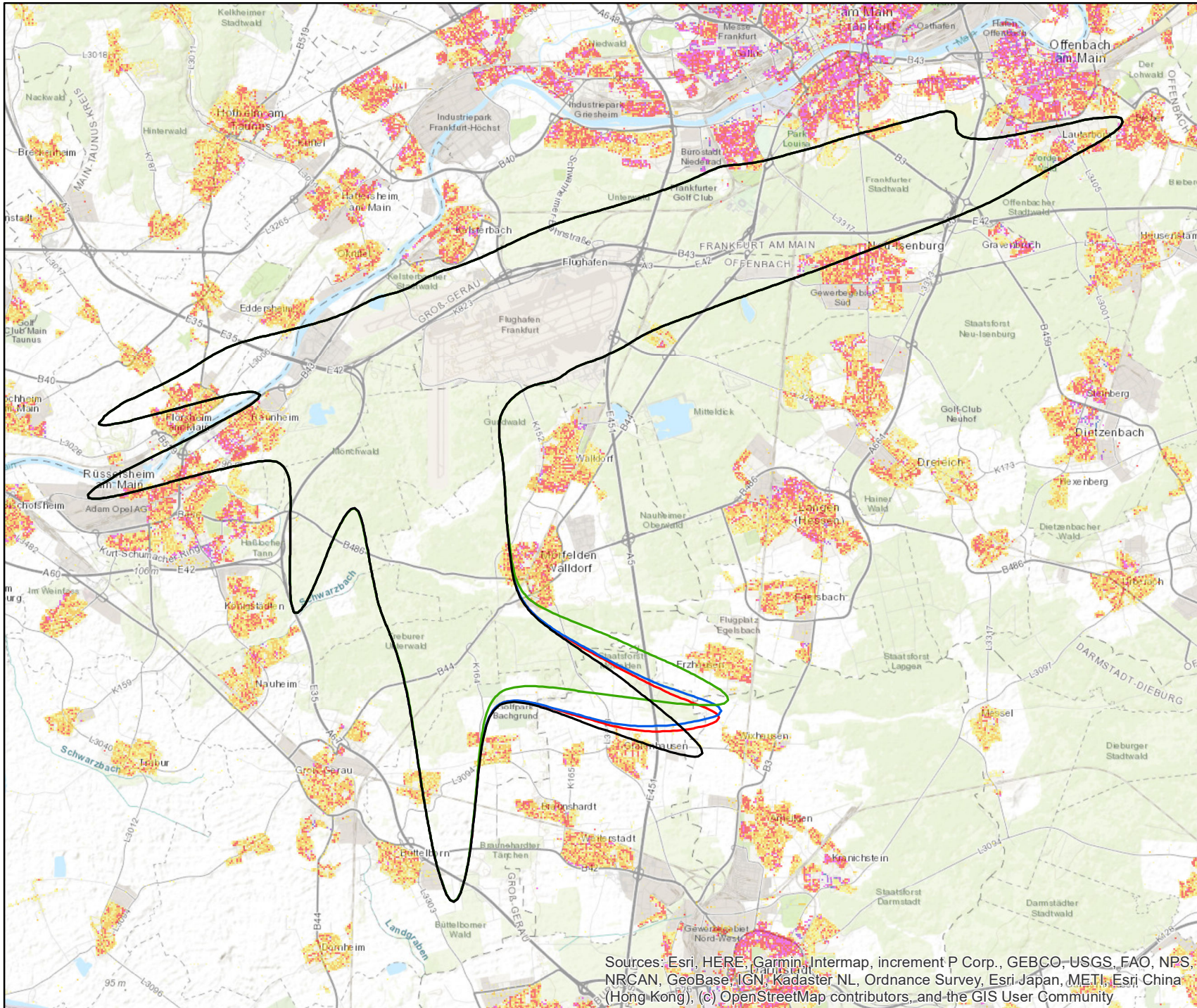


Maßstab 1:75.000

Sources: Esri, HERE, Garmin, Intermap, increment P Corp., GEBCO, USGS, FAO, NPS, NRCAN, GeoBase, IGN, Kadaster NL, Ordnance Survey, Esri Japan, METI, Esri China (Hong Kong), (c) OpenStreetMap contributors, and the GIS User Community





Gemeinnützige
Umwelthaus GmbH

Amtix-kurz Varianten (DES 2023) – Tagindexgebiet 1 (L_{Aeq,T} ≥ 55 dB(A))



Legende

Amtix-kurz Varianten

-  Referenz
-  CINDY S_A_BR18
-  CINDY S_B_BR18
-  CINDY S_C_BR18

Bevölkerungsdichte (Personen/50 m x 50 m)

-  ≤ 5
-  > 5 - 10
-  > 10 - 20
-  > 20 - 50
-  > 50 - 110
-  > 110 - 250
-  > 250

Quelle: infas 360 GmbH, 2023



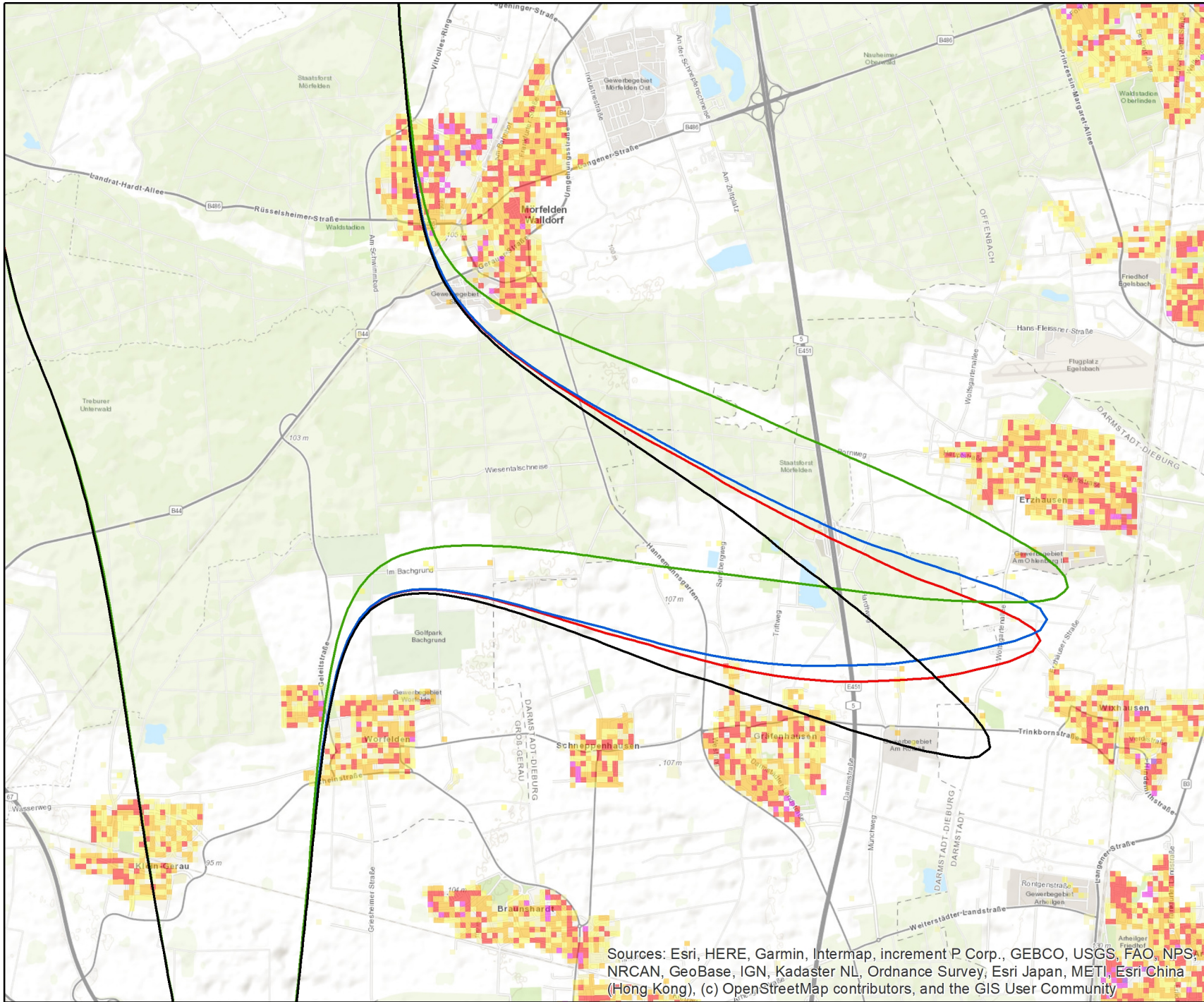
0 3 6 km

Maßstab 1:150.000

Sources: Esri, HERE, Garmin, Intermap, increment P Corp., GEBCO, USGS, FAO, NPS, NRCAN, GeoBase, IGN, Kadaster NL, Ordnance Survey, Esri Japan, METI, Esri China (Hong Kong), (c) OpenStreetMap contributors, and the GIS User Community

Gemeinnützige
Umwelthaus GmbH

Amtix-kurz (DES 2023) – Tagindexgebiet 1 (LAeq,T ≥ 55 dB(A))



Legende

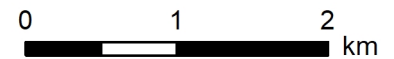
Amtix-Varianten

- Referenz
- CINDY S_A_BR18
- CINDY S_B_BR18
- CINDY S_C_BR18

Bevölkerungsdichte (Personen/50 m x 50 m)

- ≤ 5
- > 5 - 10
- > 10 - 20
- > 20 - 50
- > 50 - 110
- > 110 - 250
- > 250

Quelle: infas 360 GmbH, 2023

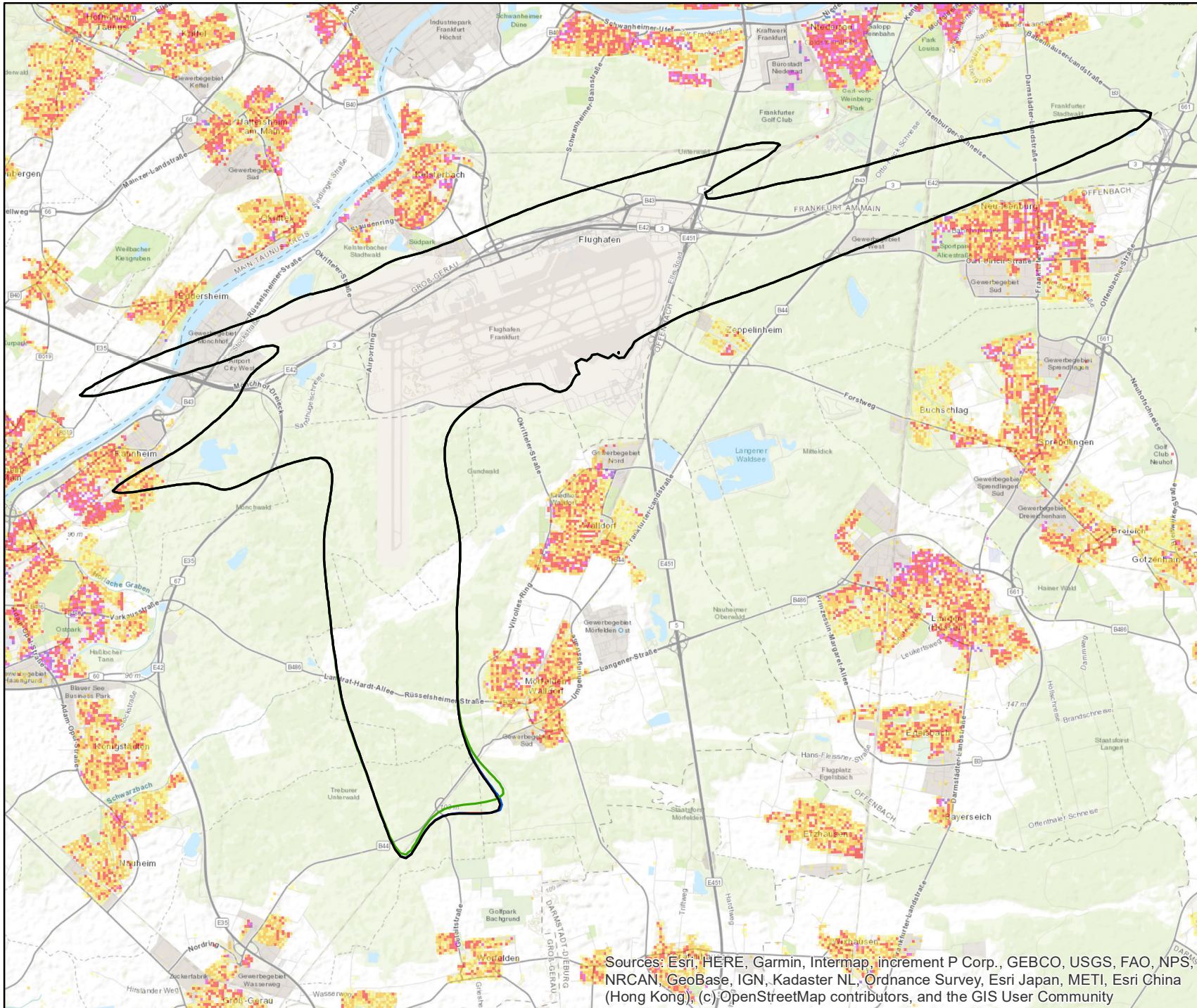


Maßstab 1:50.000

Sources: Esri, HERE, Garmin, Intermap, increment P Corp., GEBCO, USGS, FAO, NPS, NRCAN, GeoBase, IGN, Kadaster NL, Ordnance Survey, Esri Japan, METI, Esri China (Hong Kong), (c) OpenStreetMap contributors, and the GIS User Community





Gemeinnützige Umwelthaus GmbH

Amtix-kurz Varianten (DES 2023) – Hochbetroffenengebiet Tag (L_{Aeq,T} ≥ 60 dB(A))



Legende

Amtix-kurz Varianten

-  Referenz
-  CINDY S_A_BR18
-  CINDY S_B_BR18
-  CINDY S_C_BR18

Bevölkerungsdichte (Personen/50 m x 50 m)

-  ≤ 5
-  > 5 - 10
-  > 10 - 20
-  > 20 - 50
-  > 50 - 110
-  > 110 - 250
-  > 250

Quelle: infas 360 GmbH, 2023



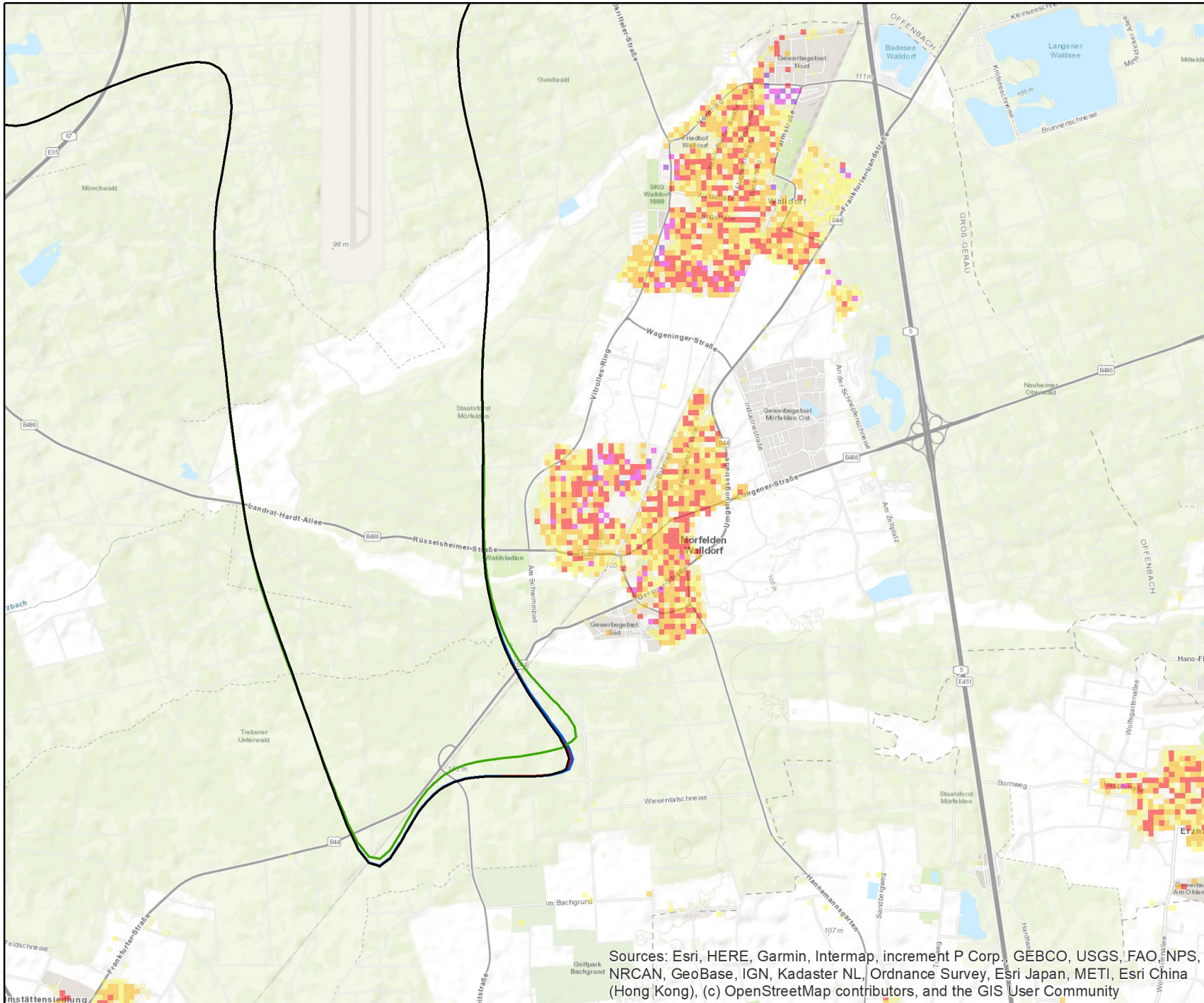
0 2 4 km

Maßstab 1:100.000

Sources: Esri, HERE, Garmin, Intermap, increment P Corp., GEBCO, USGS, FAO, NPS, NRCAN, GeoBase, IGN, Kadaster NL, Ordnance Survey, Esri Japan, METI, Esri China (Hong Kong), (c) OpenStreetMap contributors, and the GIS User Community

Gemeinnützige
Umwelthaus GmbH

Amtix-kurz (DES 2023) – Hochbetroffenengebiet Tag (L_{Aeq,T} ≥ 60 dB(A))



Legende

Amtix-Varianten

- Referenz
- CINDY S_A_BR18
- CINDY S_B_BR18
- CINDY S_C_BR18

Bevölkerungsdichte (Personen/50 m x 50 m)

- ≤ 5
- > 5 - 10
- > 10 - 20
- > 20 - 50
- > 50 - 110
- > 110 - 250
- > 250

Quelle: infas 360 GmbH, 2023



0 1 2 km

Maßstab 1:50.000

Sources: Esri, HERE, Garmin, Intermap, increment P Corp., GEBCO, USGS, FAO, NPS, NRCAN, GeoBase, IGN, Kadaster NL, Ordnance Survey, Esri Japan, METI, Esri China (Hong Kong), (c) OpenStreetMap contributors, and the GIS User Community

Gemeinnützige
Umwelthaus GmbH