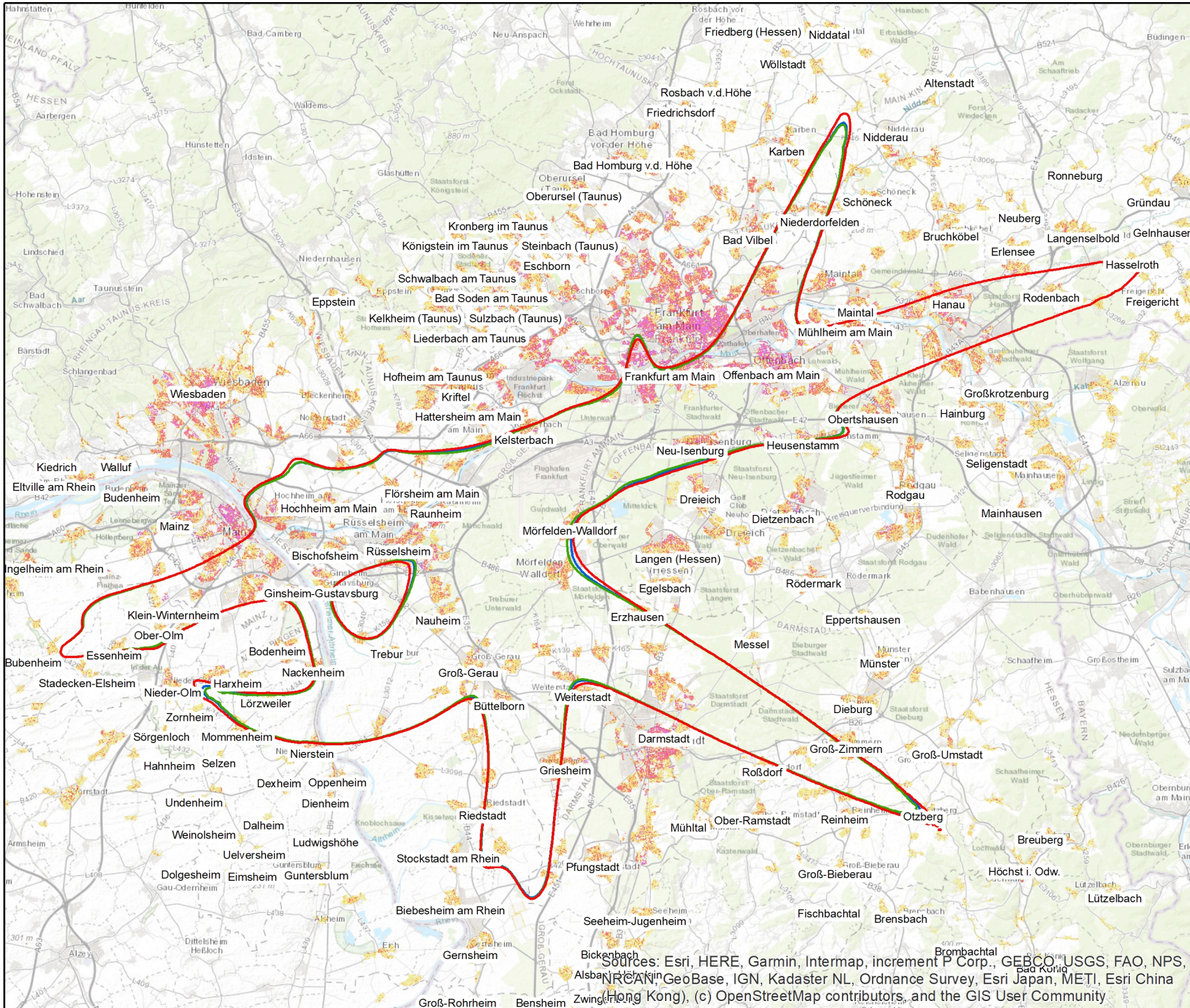


Erw. Kontrollgebiet Tag (L_{Aeq,T} ≥ 48 dB(A))



Legende

Startverfahren

- NADP1
- NADP2-10
- NADP2-15

Bevölkerungsdichte (Personen/50 m x 50 m)

- ≤ 5
- > 5 - 10
- > 10 - 20
- > 20 - 50
- > 50 - 110
- > 110 - 250
- > 250

Quelle: infas 360 GmbH, 2021



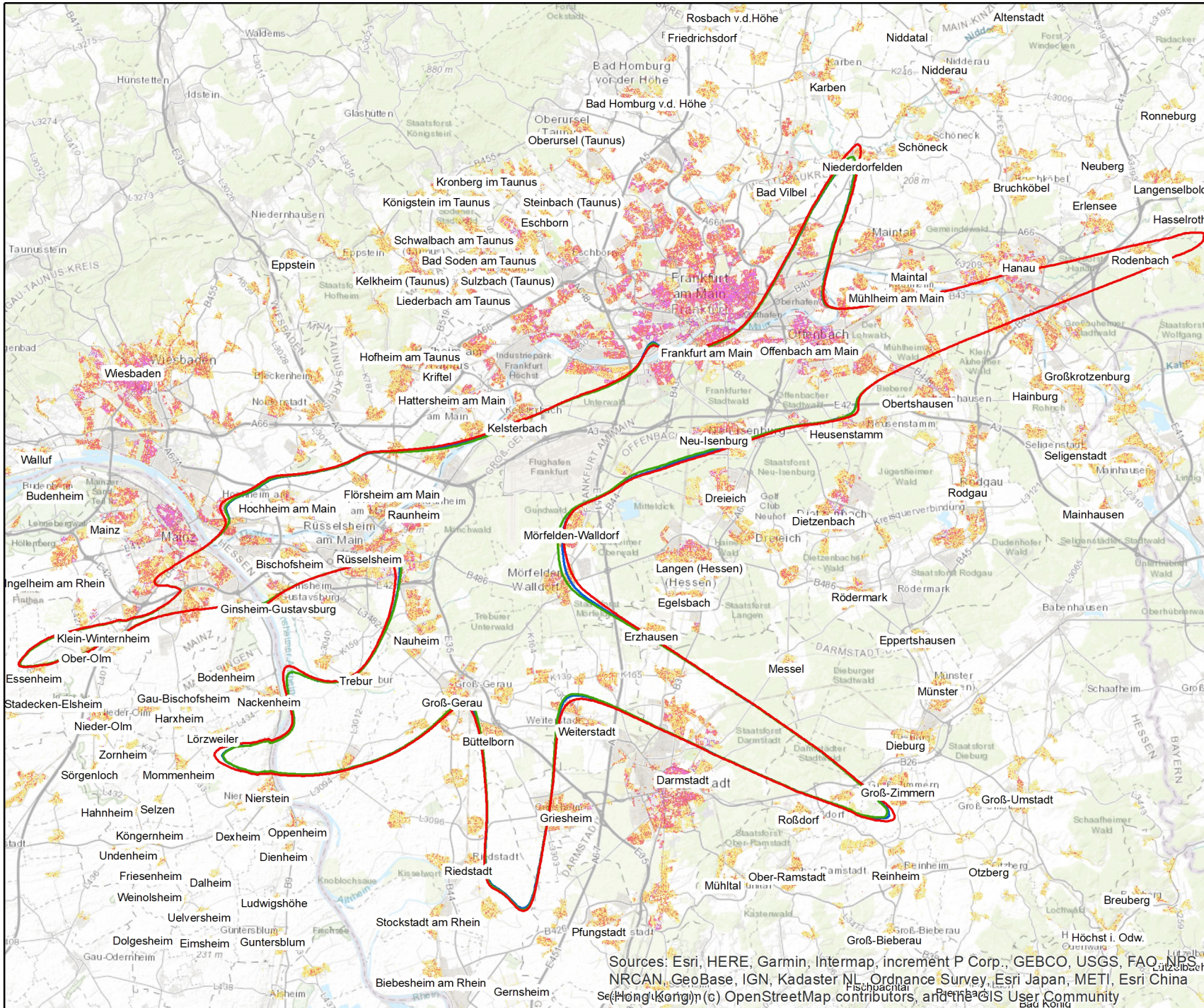
0 8 16 km

Maßstab 1:350.000

Sources: Esri, HERE, Garmin, Intermap, increment P Corp., GEBCO, USGS, FAO, NPS, NRCAN, GeoBase, IGN, Kadaster NL, Ordnance Survey, Esri Japan, METI, Esri China (Hong Kong), (c) OpenStreetMap contributors, and the GIS User Community

Gemeinnützige
Umwelthaus GmbH

Tagindexgebiet 2 (LAeq,T ≥ 50 dB(A))



Legende

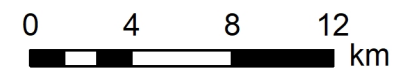
Startverfahren

- NADP1
- NADP2-10
- NADP2-15

Bevölkerungsdichte (Personen/50 m x 50 m)

- ≤ 5
- > 5 - 10
- > 10 - 20
- > 20 - 50
- > 50 - 110
- > 110 - 250
- > 250

Quelle: infas 360 GmbH, 2021

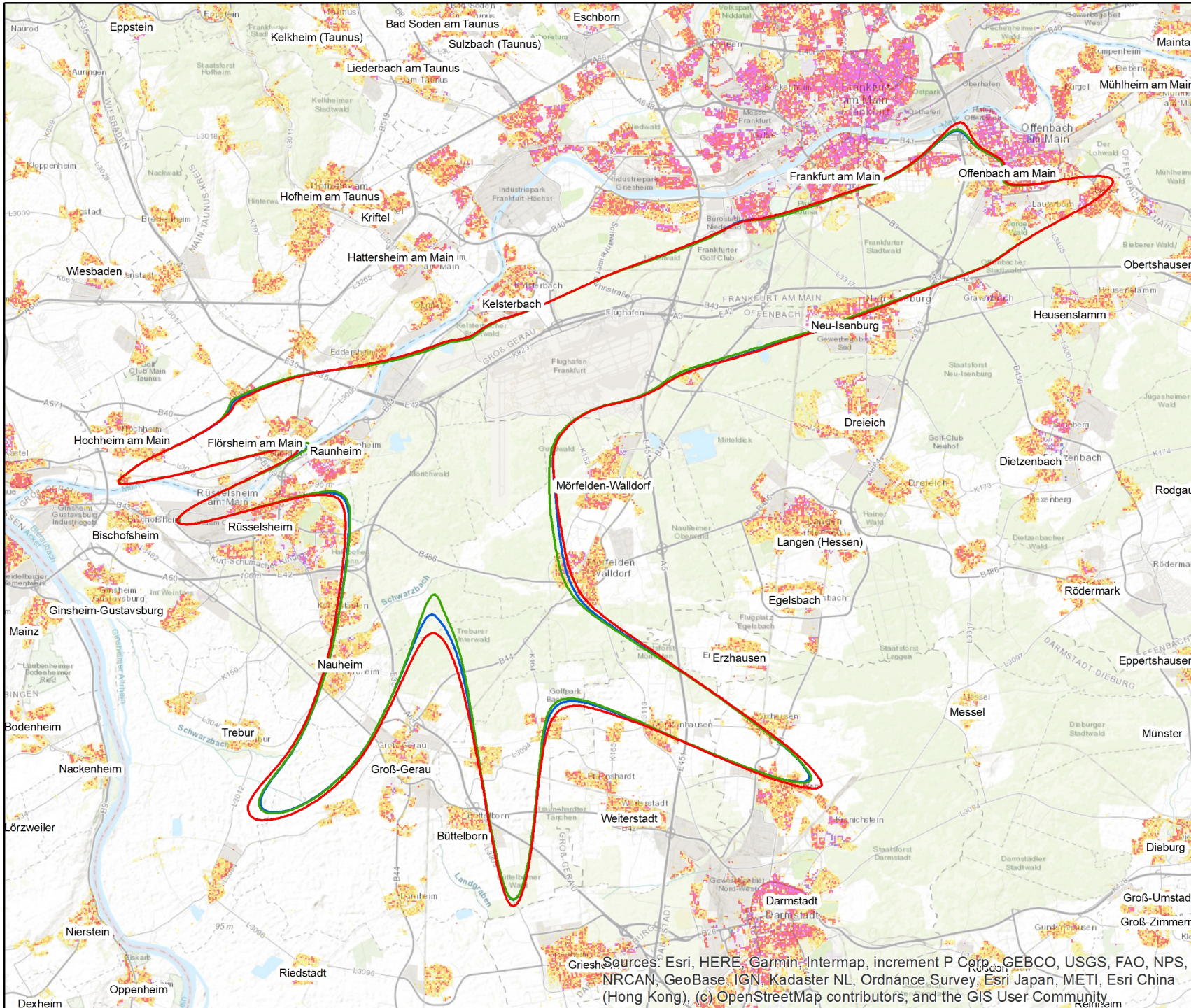


Maßstab 1:300.000

Sources: Esri, HERE, Garmin, Intermap, increment P Corp., GEBCO, USGS, FAO, NPS, NRCAN, GeoBase, IGN, Kadaster NL, Ordnance Survey, Esri Japan, METI, Esri China (Hong Kong), (c) OpenStreetMap contributors, and the GIS User Community

Gemeinnützige
Umwelthaus GmbH

Tagindexgebiet 1 (LAeq,T ≥ 55 dB(A))



Legende

Startverfahren

- NADP1
- NADP2-10
- NADP2-15

Bevölkerungsdichte (Personen/50 m x 50 m)

- ≤ 5
- > 5 - 10
- > 10 - 20
- > 20 - 50
- > 50 - 110
- > 110 - 250
- > 250

Quelle: infas 360 GmbH, 2021

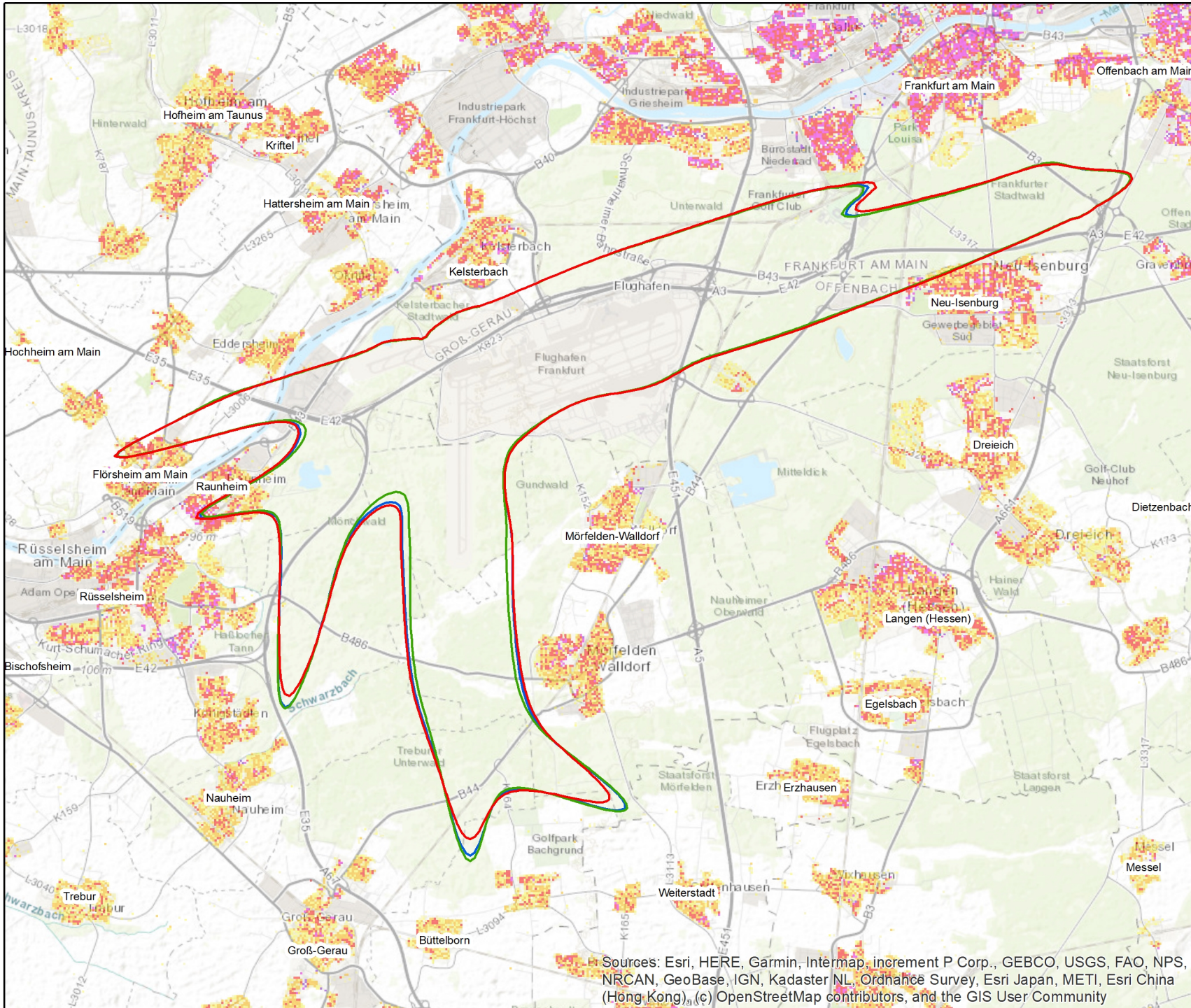


Maßstab 1:175.000

GIS Sources: Esri, HERE, Garmin, Intermap, increment P Corp., GEBCO, USGS, FAO, NPS, NRCAN, GeoBase, IGN, Kadaster NL, Ordnance Survey, Esri Japan, METI, Esri China (Hong Kong), (c) OpenStreetMap contributors, and the GIS User Community

Gemeinnützige
Umwelthaus GmbH

Hochbetroffenengebiet Tag (LAeq,T ≥ 60 dB(A))



Legende

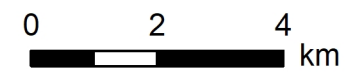
Startverfahren

- NADP1
- NADP2-10
- NADP2-15

Bevölkerungsdichte (Personen/50 m x 50 m)

- ≤ 5
- > 5 - 10
- > 10 - 20
- > 20 - 50
- > 50 - 110
- > 110 - 250
- > 250

Quelle: infas 360 GmbH, 2021



Maßstab 1:120.000

Sources: Esri, HERE, Garmin, Intermap, increment P Corp., GEBCO, USGS, FAO, NPS, NRCAN, GeoBase, IGN, Kadaster NL, Ordnance Survey, Esri Japan, METI, Esri China (Hong Kong), (c) OpenStreetMap contributors, and the GIS User Community

Gemeinnützige
Umwelthaus GmbH